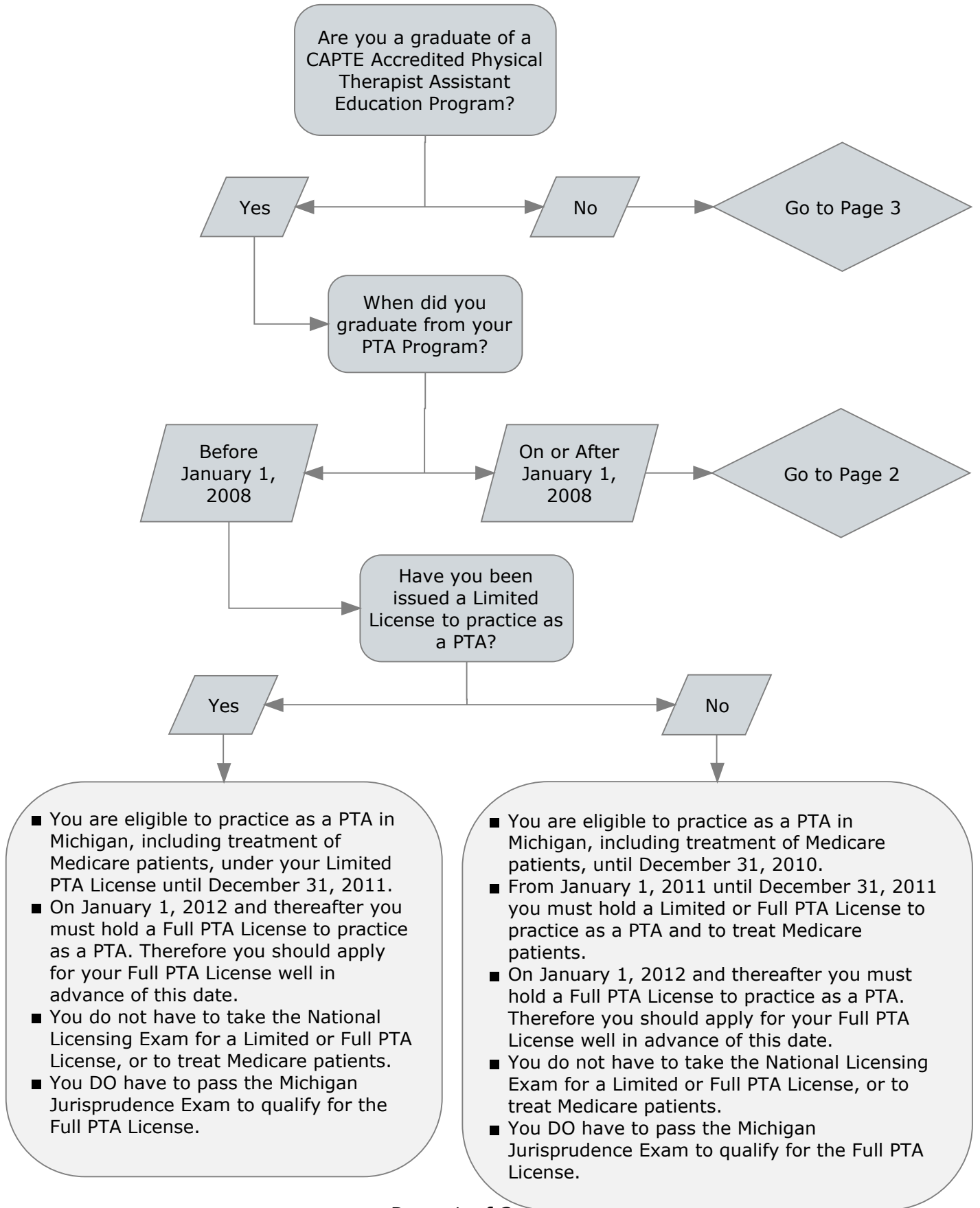
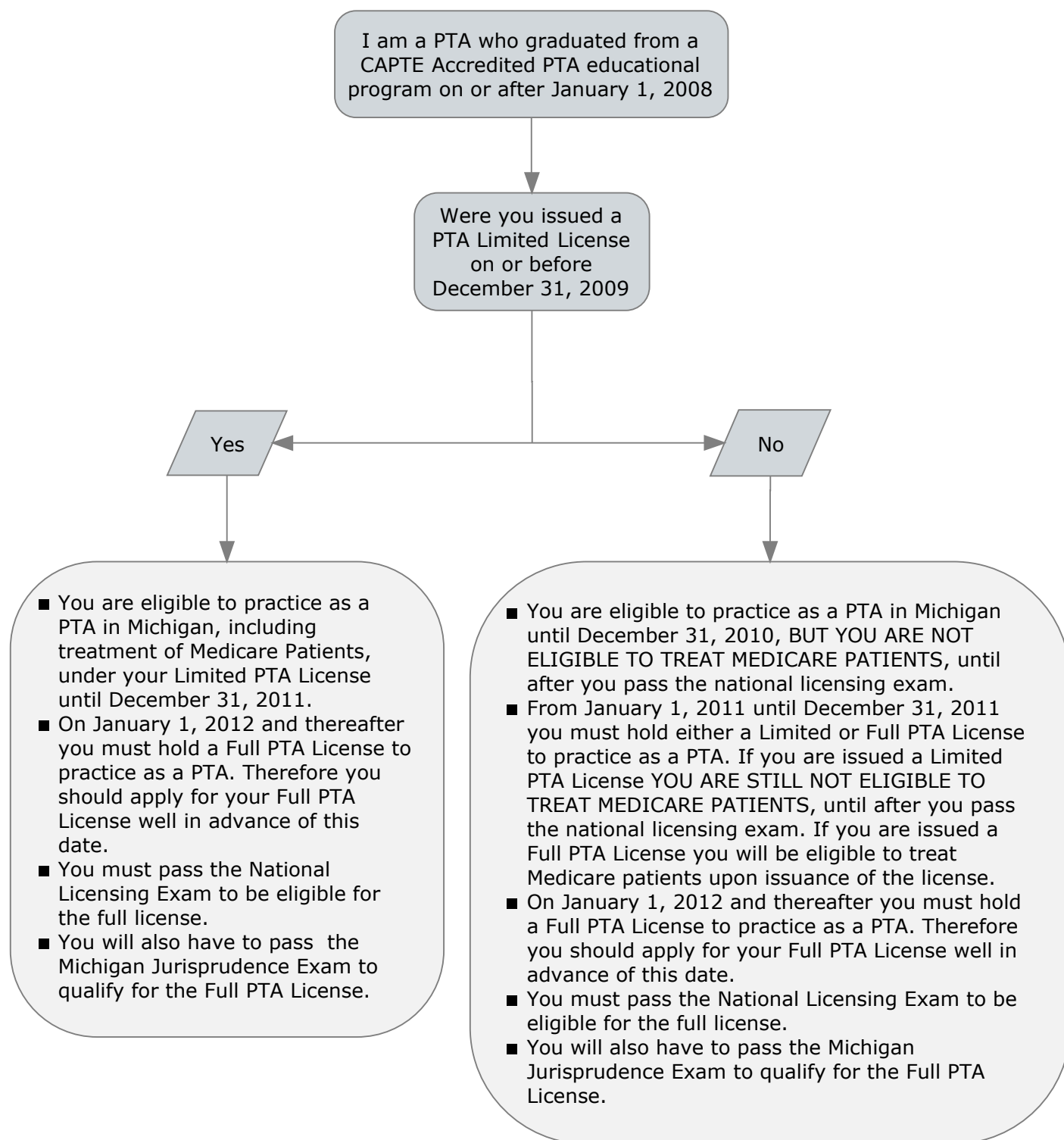


Michigan Physical Therapy Association Interpretation of Medicare and State of Michigan Regulations of Physical Therapist Assistant Practice As of February 4, 2010



Michigan Physical Therapy Association Interpretation of Medicare and State of Michigan Regulations of Physical Therapist Assistant Practice As of February 4, 2010



Michigan Physical Therapy Association Interpretation of Medicare and State of Michigan Regulations of Physical Therapist Assistant Practice As of February 4, 2010

I did not graduate
from a CAPTE
Accredited PTA
Educational Program

- You are not eligible to treat Medicare Patients unless you have passed the National Licensing Exam and met current State of Michigan licensing requirements.
- You may or may not be eligible for a Limited PTA License. Eligibility is assessed on a case-by-case basis and is determined by other criteria. Contact the Michigan Bureau of Health Professions for information.
- You may be eligible to apply for a Full PTA License even if you are not eligible for a Limited PTA License. Eligibility for a Full PTA License can be determined only after the Administrative Rules are issued that address PTA licensure. Please check the State of Michigan website for updated administrative rules. They are not expected before summer of 2010.
- As part of your application for a Limited or Full PTA License you will have to obtain proof of educational equivalency as prescribed on the State of Michigan website and in the application materials. We expect that the mechanism for educational review will be through the following agencies:
 - FCCPT
 - + 124 West Street South, 3rd Floor
 - + Alexandria, VA 22314
 - + Website: www.fccpt.org Telephone: (703) 684-8406
 - International Consultants of Delaware, Inc.
 - + PO Box 8629
 - + Philadelphia, PA 19101-8629
 - + Website: www.icdel.com
 - + Telephone: (215) 222-8454 ext. 510
 - + Fax: (215) 349-0026
 - International Education Research Foundation, Inc.
 - + P.O. Box 3665, Culver City, CA 90231-3665
 - + Website: www.ierf.org
 - + Telephone: (310) 258-9451
 - + Fax: (310) 342-7086

References

- Code of Federal Regulations: 42 CFR 484.4 Personnel qualifications.
- Federal Register / Vol. 72, No. 227 / Tuesday, November 27, 2007 / Rules and Regulations - page 66408, as it affects 42 CFR section 484.4
- Limited Physical Therapist Assistant Licensure Instructions: Michigan Department of Community Health, Lansing, MI, DCH/LPT-501 (09/09)
- Wisconsin Physician Services Web Posting on 2/1/2010:
http://www.wpsmedicare.com/part_b/publications/2010_0127_mipta.shtml
- National Government Services, Inc. Posting on 2/2/2010:
<http://www.ngsmedicare.com/Content.aspx?CatID=1&DOCID=21566>
- Physical Therapist Assistant Licensure. Bureau of Health Professions, Michigan Department of Public Health web postings on 2/4/2010:
http://www.michigan.gov/documents/mdch/mdch_ptaannouncement_292582_7.pdf
http://www.michigan.gov/documents/mdch/mdch_ptamedicarerequire_307957_7.pdf